

# 2017 CATERPILLAR 301.7DCR TRACK EXCAVATORS

## INSPECTION DETAILS

Inspection Type	Marketing
Inspection #	2803108
Inspection Status	Inspected
Created	09/20/22 07:09:53
Updated	09/20/22 07:42:17
Created By	Willis, Joseph
Inspector	Willis, Joseph
Reviewers	Willis, Joseph
Stock #	E171582
Serial #	LJ800988
SMU / Hours	816



## FEATURES

- BOOM, 1 PIECE
  - RUBBER TRACK
- ENGINE ENCLOSURES
  - STICK, LONG
- HAND AND FOOT CONTROL



## CONDITION

●●● Good

●● Fair

● Poor

Approved Repair

## GENERAL APPEARANCE

●●● Car Body

●●● Counterweight

●●● Crankcase Guard / Battery Box

●●● Decals

●●● Eng. Enclose Hood / Stack

●●● Engine Doors

●●● Fuel Tank

●●● Grab Irons

●●● Main Frame Welds

●● Paint  
THERE IS RUST AROUND  
MACHINE, NEEDS ASSESSED  
FOR SANDING AND TOUCH UP  
PAINT

●● Radiator Grill & Shroud  
RADIATOR GRILL WELDS  
CRACKED FROM BODY PANEL  
AND BENT IN, CAN BE  
REPAIRED.

●● Sheet Metal  
BODY PANEL DAMAGE, NEEDS  
HARDWARE INSTALLED AND  
ASSESSED FOR IMPACT DENT  
REPAIRS.

**YES** Cleaning Required

## SAFETY ITEMS

● Horn  
HORN IS INOPERABLE MISSING  
BUTTON.

**YES** ROPS

**YES** Safety Decals In Place

**YES** Safety Decals Legible

## GAUGES, OPERATOR STATION, CONSOLE

●●● Dash Console

●●● EMS Panel / Warnings

●●● Floor Boards

●●● Gauges

●●● Glass/Mirrors

●●● Meter

●●● Seat Cushion / Arm Rest

●● Switches  
2 SPEED SELECTOR SWITCH  
LOOSE AND INTERMITTENT.

**YES** Back Up Alarm  
Travel alarm not working

**NO** Current O&MM  
No Manual

**NO** Current Parts Manual  
No Manual



**NO** Current Safety Manual  
No Manual

Fuel Level  
50%

ENGINE

- Air Cleaners
- Belts / Pulleys
- Engine Supports
- Exhaust / Muffler
- Fuel Injection System
- Governor
- Operating Condition - ENGINE

- NO**

Blow By
- NO**

Compression in Radiator
- YES**

Fluid Levels OK?
- NO**

Knocking
- NO**

Oil Leaks  
NO LEAKS OBSERVED.
- NO**

Water in Oil
- Anti-Freeze Color  
RED
- Oil Pressure (H/L/N)  
NORMAL
- Smoke (B/D/L/W)  
NORMAL

COOLING SYSTEM

- Fan
- Hoses
- Radiator
- Water Pump
- NO**

Leaks

ELECTRICAL, STARTING AND CHARGING SYSTEM

- Alternator
- Batteries / Cables  
Battery will not hold a chargr
- Starter  
STARTER HAS AUDIBLE  
GRINDING AND HARD START,  
NEEDS ASSESSED FOR REPAIR  
OR REPLACEMENT.
- Wiring



HYDRAULICS

<div><div></div><div></div><div></div></div> Boom Cylinder	<div><div></div><div></div><div></div></div> Bucket Cylinder	<div><div></div><div></div><div></div></div> Control Linkage
<div><div></div><div></div><div></div></div> Hose Lines	<div><div></div><div></div><div></div></div> Operating Condition - HYDRAULICS	<div><div></div><div></div><div></div></div> Pump Drive
<div><div></div><div></div><div></div></div> Pumps & Valves	<div><div></div><div></div><div></div></div> Rotex	<div><div></div><div></div><div></div></div> Stick Cylinder
<div><div></div><div></div><div></div></div> Swing Gear	<div><div></div><div></div><div></div></div> Swing Motors	<div><div></div><div></div><div></div></div> Tank
<div><div></div><div></div><div></div></div> Travel Motors		

ATTACHMENTS / WORK TOOLS

<div><div></div><div></div></div> BLADE Missing pin for the extension left side		
--	--	--

BOOM

<div><div></div><div></div><div></div></div> Boom Condition	<div><div></div><div></div><div></div></div> Boom Pins	<div><div></div><div></div><div></div></div> Pins & Bushings - BOOM
Boom Length (Actual Length) 5.8 ft		

STICK

<div><div></div><div></div><div></div></div> Pins & Bushings - STICK	<div><div></div><div></div><div></div></div> Stick Conditions	<div><div></div><div></div><div></div></div> Stick Pins
Stick Length 3.6 ft		

BUCKET

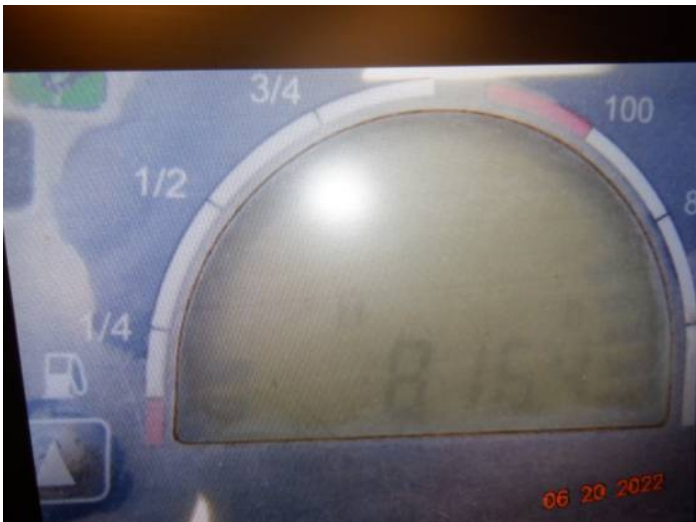
<div><div></div><div></div><div></div></div> Bucket Bottom	<div><div></div><div></div><div></div></div> Bucket Linkage	<div><div></div><div></div><div></div></div> Bucket Sides
<div><div></div><div></div><div></div></div> Cutting Edges		
NO Quick Coupler		



Brand NA	Notes - BUCKET Non Cat	Width Ditch bucket
<b>UNDERCARRIAGE</b>		
<div><div>●●●</div>Track Frame - Left</div>	<div><div>●●●</div>Track Frame - Right</div>	<div><div><div>●●</div>TRACKS</div><div>RIGHT TRACK OUTER EDGE HAS CHUNKS TAKEN OUT. INTACT AND OPERABLE. 90% ACCUMULATIVE LIFE REMAINING.</div></div>
<div>Average Life Remaining - UNDERCARRIAGE</div> <div>Both tracks 27 32nds 90% remaining</div>	<div>Cannon</div> <div>GOOD</div>	<div>Idlers</div> <div>GOOD</div>
<div>Segments</div> <div>GOOD</div>		
<b>FINAL DRIVES</b>		
<div><div>●●●</div>Housings</div>	<div><div>●●●</div>Planetaries / Diff</div>	



# MARKETING PHOTOS (20)



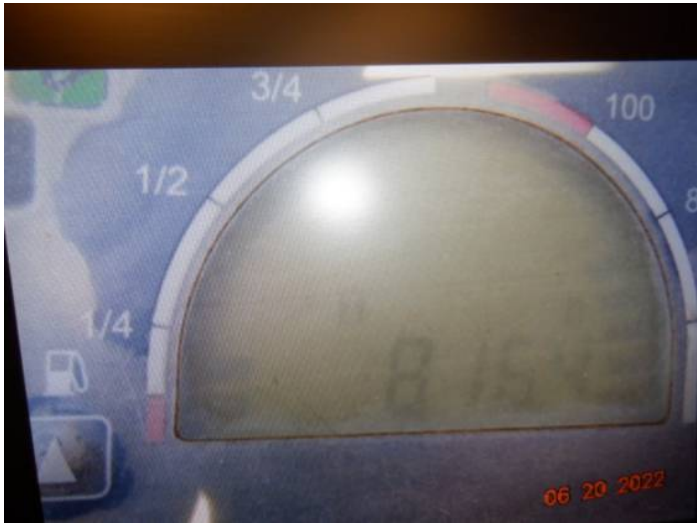














## CONDITION PHOTOS (1)

Notes - BUCKET

Non Cat

