

2018 CATERPILLAR 32307 TRACK EXCAVATORS

INSPECTION DETAILS

Inspection Type	Trade
Inspection #	2757099
Inspection Status	Created
Created	12/01/21 11:41:15
Updated	12/01/21 15:46:26
Created By	Korman, Edward D.
Inspector	Korman, Edward D.
Salesperson	Schultis, Derrick R.
Stock #	E174038
Serial #	RAZ01263
SMU / Hours	2,051
Location	ELOY , AZ, United States



CLIENT DETAILS

Name	Schultis, Derrick
Company	Empire Machinery
Address	3501 W. Houser Rd.
City	Eloy
State	Arizona
Country	United States
Postal Code	
Email	Derrick.schultis@empire-cat.com
Phone	

FEATURES

- AIR CONDITIONER
- CARBODY, STANDARD
- HAND AND FOOT CONTROL
- STRAIGHT TRAVEL PEDAL
- AM FM RADIO
- ENGINE ENCLOSURES
- LIGHTING
- ULTRA LOW SULFUR DIESEL FUEL
- BOOM, 1 PIECE
- EPA LABEL
- PRODUCT LINK

CONDITION

●●● Good

●● Fair

● Poor

GENERAL APPEARANCE

PARTS & LABOR TOTAL: 686.00

●●● Bumper

●●● Car Body

●●● Counterweight

●●● Crankcase Guard / Battery Box

●●● Decals

●●● Draw Bar

●●● Eng. Enclose Hood / Stack

●●● Engine Doors

●●● Fenders

●●● Fuel Tank

●●● Grab Irons

●●● Hood

●●● Main Frame Welds

●●● Paint

●●● Radiator Grill & Shroud

●●● Steps / Ladder

YES Cleaning Required
Labor: 524.80

NO Extra Fuel Tanks

YES S.O.S. Taken
ENGINE, HYDRAULIC
Parts: 30.00
Labor: 131.20

SAFETY ITEMS

●●● Horn

●●● Secondary Exit

YES ROPS

YES Safety Decals In Place

YES Safety Decals Legible

GAUGES, OPERATOR STATION, CONSOLE

PARTS & LABOR TOTAL: 140.16

●●● Air Conditioner

●●● Dash Console

●●● Door Latches

●●● Floor Boards

●●● Gauges

●●● Glass/Mirrors

●●● Heater


●●● Interior Lights

●●● Meter









●●● Product Link

●●● Seat Belt







●●● Seat Cushion / Arm Rest

 Switches	 Windshield Wipers	
YES Back Up Alarm	YES Current O&MM	NO Current Parts Manual
YES Current Safety Manual	YES ROPS Certification Plate	
Diesel Exhaust Fluid (DEF) Level 1/2 full	Fuel Level 1/2 full	Notes - GAUGES, OPERATOR STATION, CONSOLE MISSING COVER Parts: 8.96 Labor: 131.20

ENGINE

 Air Cleaners DIRTY	 Belts / Pulleys	 Engine Supports
 Exhaust / Muffler	 Fuel Injection System	 Governor
 Operating Condition - ENGINE	 Turbocharger / Blower	
NO Blow By	NO Compression in Radiator	YES EPA Decal
YES Fluid Levels OK?	NO Knocking	NO Oil Leaks
NO Water in Oil		
Anti-Freeze Color Red	Oil Pressure (H/L/N) Normal	Smoke (B/D/L/W) normal

COOLING SYSTEM

 Coolers	 Fan	 Fan Drive
 Hoses	 Radiator	 Water Pump
NO Leaks		

ELECTRICAL, STARTING AND CHARGING SYSTEM

●●● Alternator

●●● Batteries / Cables

●●● Lighting

●●● Pre-Heater

●●● Starter

●●● Wiring

YES Ether Aid

HYDRAULICS

●●● Boom Cylinder

●●● Bucket Cylinder

●●● Control Linkage

●●● Hose Lines

●●● Hydraulic Swivel

●●● Operating Condition -
HYDRAULICS

●●● Pump Drive

●●● Pumps & Valves

●●● Rotex

●●● Stick Cylinder

●●● Swing Motors

●●● Tank

●●● Travel Motors

Swing Drive Oil Level
Full

BOOM

●●● Boom Condition

●●● Boom Pins

●●● Pins & Bushings - BOOM

Boom Length (Actual Length)
18'8"

STICK

●●● Pins & Bushings - STICK

●●● Stick Conditions

●●● Stick Pins

Stick Length
9'6"

BUCKET

●●● Bucket Bottom

●●● Bucket Linkage
MINIMAL MOVEMENT

●●● Bucket Mounts

●●● Bucket Sides

●● Teeth / Adapters
SOME WEAR (FUNCTIONAL)

NO Quick Coupler

Brand
Quest

Serial Number
NO TAG

Width
24"

UNDERCARRIAGE

	Measurement (L)	% Worn (L)	Total Potential Hours (L)	Measurement (R)	% Worn (R)	Total Potential Hours (R)
Carrier Rollers Front	4.68	6		4.70	3	
Carrier Rollers Rear	4.70	3		4.70	3	
Idlers Front	.80	12		.80	12	
Links	4.16	3		4.16	3	
Pins & Bushings (External)	2.36	18		2.36	18	
Track Roller 1	.72	10		.72	10	
Track Roller 2	.70	5		.70	5	
Track Roller 3	GUARD			GUARD		
Track Roller 4	.70	5		.70	5	
Track Roller 5	.70	5		.70	5	
Track Roller 6	GUARD			GUARD		
Track Roller 7	.70	5		.70	5	
Track Roller 8	.70	5		.72	10	
Track Shoes (Width)	1.10	1		1.10	1	

●●● Track Frame - Left

●●● Track Frame - Right

Cannon
GOOD

Carrier Rollers
GOOD

Idlers
GOOD

Link Part Number
335-9247

Links
GOOD

Track Shoes
GOOD

FINAL DRIVES

●●● Housings

●●● Planetaries / Diff

comment 1		comment 2		comment 3	
SERVICE MACHINE		INSPECT MACHINE		QUOTE MACHINE	
Parts:	405.87	Labor:	459.20	Labor:	262.40
Labor:	393.60				
comment 4					
FINAL MACHINE					
Labor:	196.80				

MARKETING PHOTOS (26)









CONDITION PHOTOS (9)

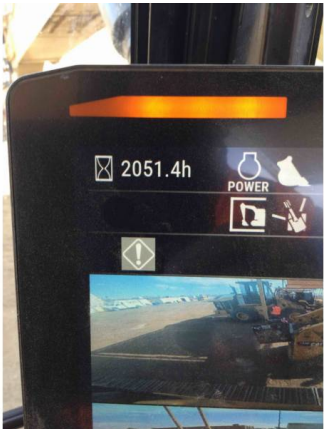
●●● Air Conditioner



●●● Heater



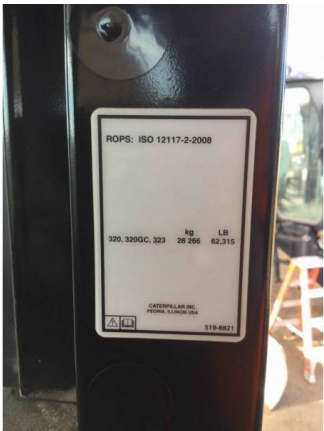
●●● Meter



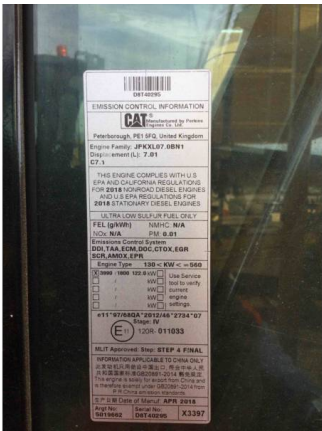
●●● Seat Belt



YES ROPS Certification Plate



YES EPA Decal



Diesel Exhaust Fluid (DEF) Level
1/2 full



Fuel Level
1/2 full



Brand
Quest

